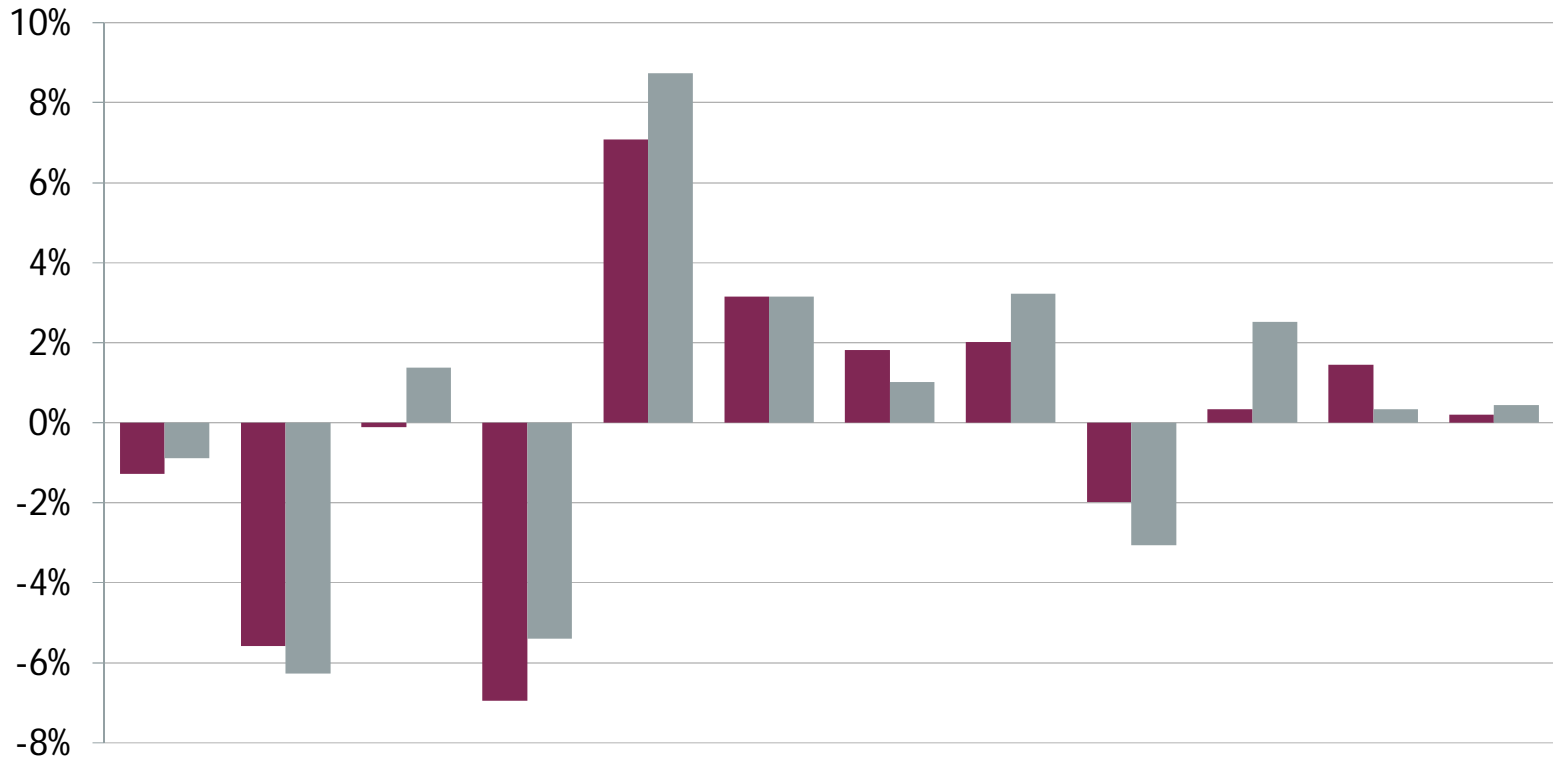


# STYLUS Value with Income Fund

## Monthly Returns for the Past 12 Months

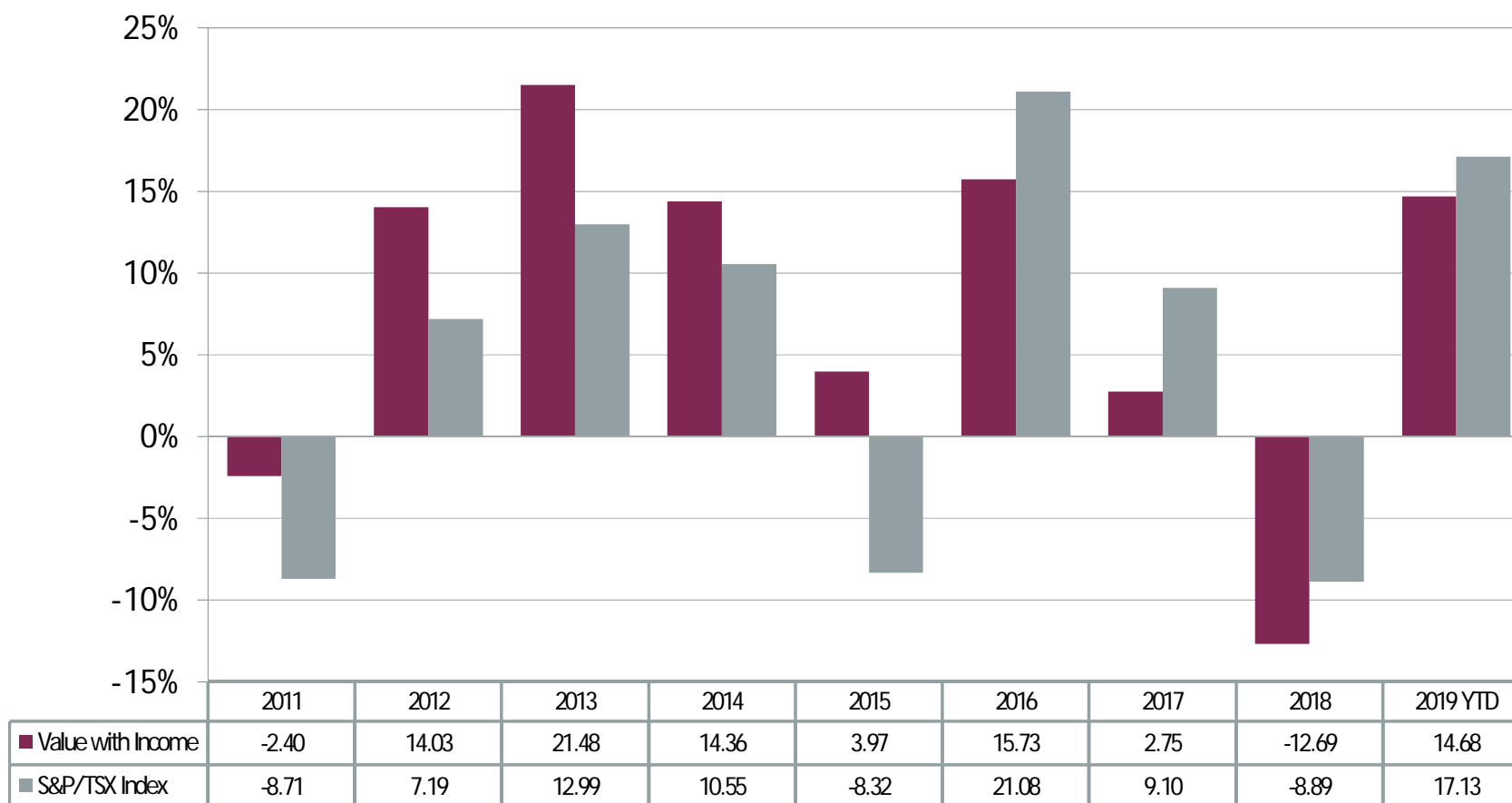


	Sep-18	Oct-18	Nov-18	Dec-18	Jan-19	Feb-19	Mar-19	Apr-19	May-19	Jun-19	Jul-19	Aug-19
■ Value with Income	-1.28	-5.58	-0.12	-6.95	7.08	3.15	1.81	2.02	-1.98	0.33	1.45	0.19
■ S&P/TSX Index	-0.89	-6.27	1.39	-5.40	8.74	3.15	1.01	3.22	-3.06	2.53	0.34	0.43

STYLUS returns are reported net of all fees.

## STYLUS Value with Income Composite

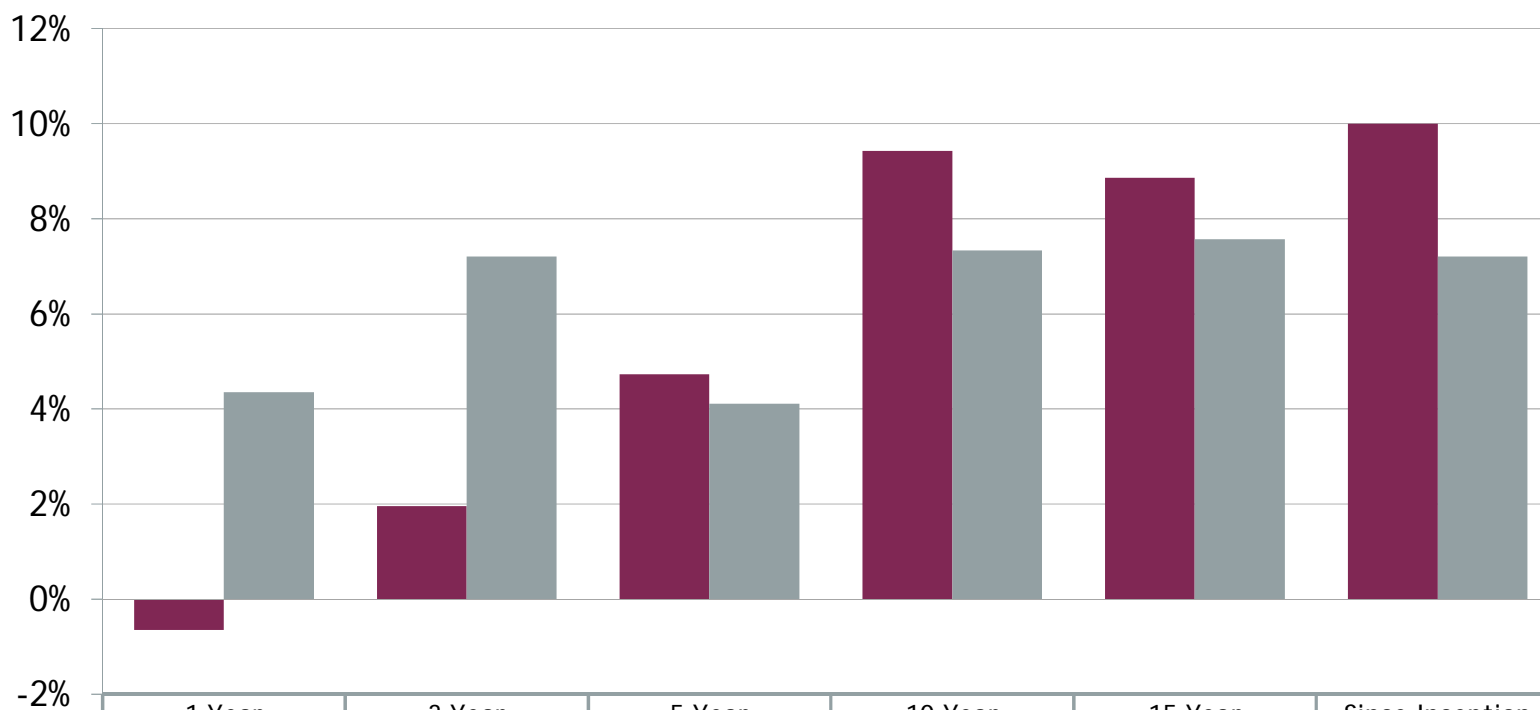
Annual Returns for the Past 10 Years



Performance of the Value with Income Composite from May 27, 2004 to present comprises the returns of the STYLUS Value with Income fund. Performance prior to this date relates to a proprietary fund managed by STYLUS Value with Income fund. Performance prior to this date relates to a proprietary fund managed by STYLUS Asset Management Inc. (formerly C.P.M.S. Computerized Portfolio Management Services Inc.) and has been reduced to account for pro-forma management fees. All other returns are shown net of all fees.

## STYLUS Value with Income Composite

Annualized Performance: 1, 3, 5 & 10 years, Since Inception (Jan 1/02)



	1 Year	3 Year	5 Year	10 Year	15 Year	Since Inception
■ Value with Income	-0.65	1.95	4.73	9.43	8.86	9.99
■ S&P/TSX Index	4.35	7.20	4.10	7.33	7.57	7.20

Performance of the Value with Income Composite from May 27, 2004 to present comprises the returns of the STYLUS Value with Income fund. Performance prior to this date relates to a proprietary fund managed by STYLUS Value with Income fund. Performance prior to this date relates to a proprietary fund managed by STYLUS Asset Management Inc. (formerly C.P.M.S. Computerized Portfolio Management Services Inc.) and has been reduced to account for pro-forma management fees. All other returns are shown net of all fees.